

Copy Paper Box Cookie Display

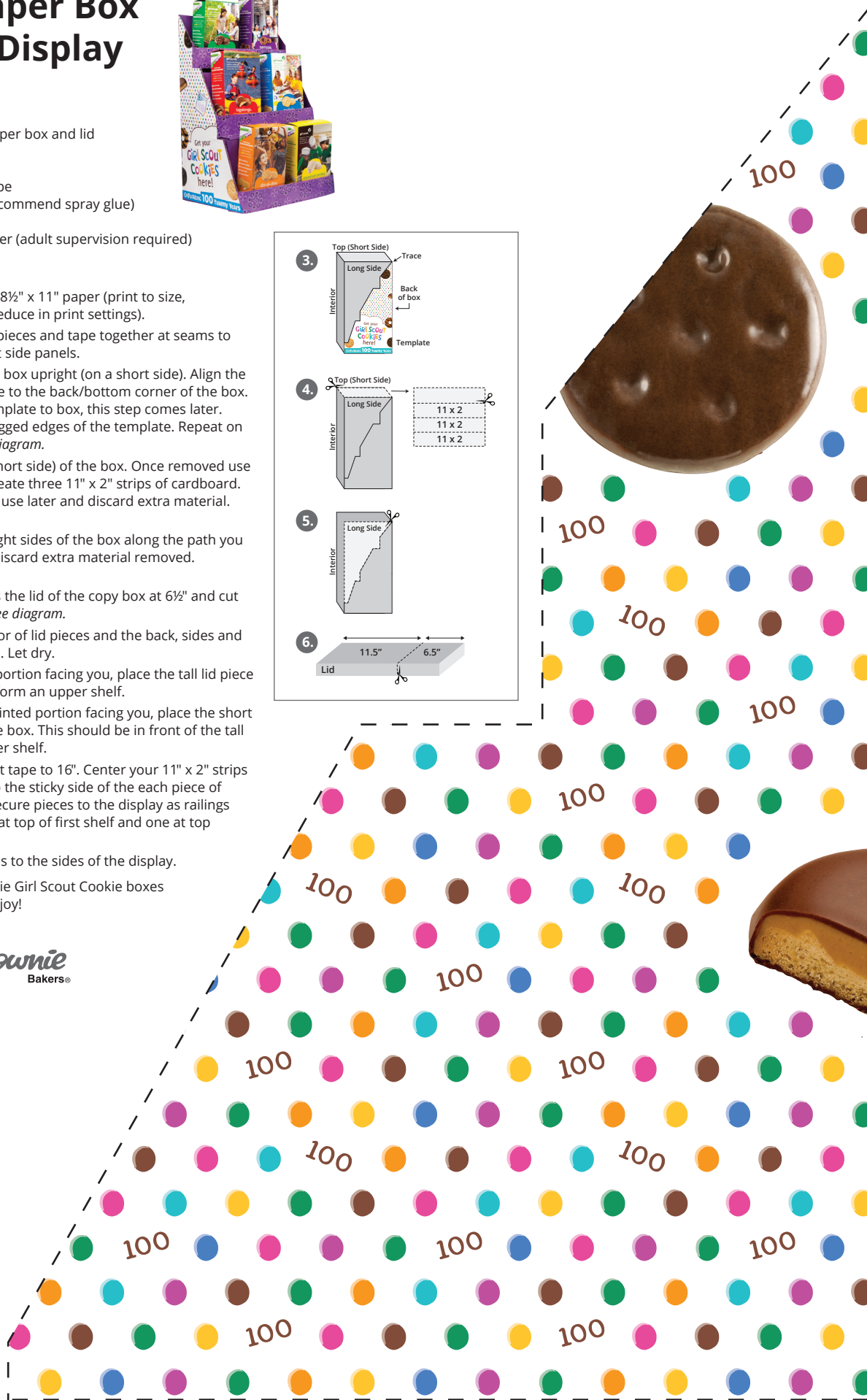
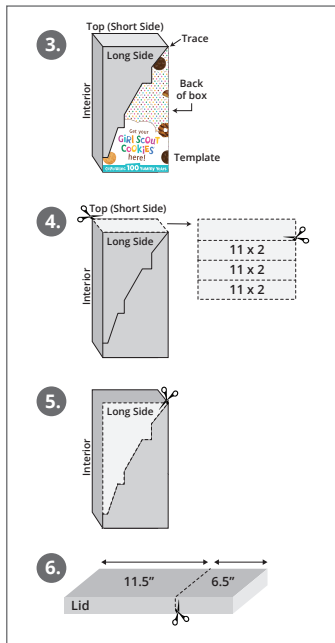
Supplies:

- Display template
- One empty copy paper box and lid
- Pencil
- Ruler
- 4 ft colorful duct tape
- Glue or tape (we recommend spray glue)
- Spray paint
- Scissors or box cutter (adult supervision required)



Steps:

1. Print template on 8½" x 11" paper (print to size, do not shrink or reduce in print settings).
2. Cut out template pieces and tape together at seams to form left and right side panels.
3. Sit the copy paper box upright (on a short side). Align the right side template to the back/bottom corner of the box. **DO NOT GLUE** template to box, this step comes later. Trace along the jagged edges of the template. Repeat on the left side. *See diagram.*
4. Cut out the top (short side) of the box. Once removed use this material to create three 11" x 2" strips of cardboard. Set aside strips to use later and discard extra material. *See diagram.*
5. Cut the left and right sides of the box along the path you traced in step 3. Discard extra material removed. *See diagram.*
6. Draw a line across the lid of the copy box at 6½" and cut into two pieces. *See diagram.*
7. Spray paint exterior of lid pieces and the back, sides and interior of the box. Let dry.
8. With the painted portion facing you, place the tall lid piece inside the box to form an upper shelf.
9. Again, with the painted portion facing you, place the short lid piece inside the box. This should be in front of the tall lid piece to form lower shelf.
10. Cut 3 piece of duct tape to 16". Center your 11" x 2" strips of cardboard onto the sticky side of the each piece of duct tape. Then secure pieces to the display as railings (one at base, one at top of first shelf and one at top of second shelf).
11. Glue the templates to the sides of the display.
12. Place Little Brownie Girl Scout Cookie boxes on shelves and enjoy!

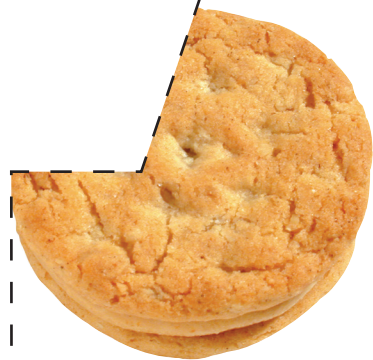


Little Brownie
www.littlebrownie.com Bakers®

®,™, © 2017 Kellogg NA Co.

↑ Right side top

Get your
GiRL Scout
COOKIES®
here!



CeLEbrating **100** YuMmy YeArs



↑ Left side top



↑ Left side bottom